

# Noekie Creek

<b>Creare:</b> 2026-01-19 10:28:17	<b>Aggiornamento:</b> 2026-01-19 11:14:42	<b>Stampa:</b> 2026-06-07 10:06:37
<b>Paese:</b> New Zealand <b>Regione:</b> Otago <b>Sottoregione:</b> Queenstown-Lakes District <b>Città:</b> Greenstone valley		
<b>Difficoltà:</b> non così difficile	<b>Grado:</b> v3 a1 II	<b>Tempo totale:</b> 4h30
<b>Tempo avvicinamento:</b> 1h45	<b>Tempo giaro:</b> 1h45	<b>Tempo ritorno:</b> 1h
<b>Altitudine di entrata:</b> 650m	<b>Altitudine di uscita:</b> 410m	<b>Altitudine delta:</b> 240m
<b>Lunghezza del canyon:</b> m	<b>Rapel più alto:</b> 60m	<b>Quantità rapelli:</b> 6
<b>Transporto:</b> Auto necessaria	<b>Tipo di roccia:</b>	<b>Area di ingresso:</b> 0.60km²
<b>Stagione:</b> ottobre - marzo	<b>Orientamento:</b>	<b>Tempo migliore:</b>
<b>Valutazione:</b> ★ 1.5 (1)	<b>Info:</b> ★ 3 (1)	<b>Belay:</b> ★ 1 (1)
<b>Specialità:</b>		
<b>Attrezzatura:</b> Corde: 2x60		
<b>Sintesi:</b> Sunny canyon with 6 easy abseils up to 60m.		
<b>Idrologia:</b> Canyon with a small catchment area. Low flow, good after rain and in the start of the season.		
<b>Accesso:</b> Drive from Queenstown to Glenorchy, go to Kinloch and follow the dirt road to the Greenstone carpark. You will have to pass some fords.		
<b>Avvicinamento:</b> Follow the Greenstone Track to the creek and look for the blue triangle marked with number 126. From there, go up and follow the animal tracks to the 650m contour. It's steep in some places but not dangerous. From the 650m contour, try to find your way into the canyon.		
<b>Giro:</b> Beautiful approach, 6 easy abseils in low flow, good canyon for beginners. Sharpe edge on abseil 4.		
<b>Ritorno:</b> From the bridge, walk back to the carpark using the same trail you came from (Greenstone Trail).		
<b>Coordinate:</b> Parcheggio Entrata e uscita <a href="#">-44.9341 168.3450</a> Inizio del canyon <a href="#">-44.9413 168.3048</a> Fine del canyon <a href="#">-44.9447 168.3041</a>		
<b>Rapporti:</b>		
2026-01-18   Pepijn Hoeksema   ★ 🏠   ★★ ★   🚣 ★   🌊 Normale   👍 Completato 18/01/2026 we opened Noekie Creek with Jaap, Pepijn, Anouk and Britt. Low flow canyon with 6 abseils.		

Prima discesa: 18.01.2026 da Pepijn Hoeksema, Jaap Sikkema, Britt Joosten, Anouk Verstraaten



# Noekie creek V3A1II



## Location

Greenstone valley, Glenorchy, Otago, New Zealand.

## Character

Sunny canyon with 6 easy abseils up to 60m.

## Approach by car

Drive from Queenstown to Glenorchy, go to Kinloch and follow the dirt road to the Greenstone carpark. You will have to pass some fords.

## Approach on foot

Follow the Greenstone Track to the creek and look for the blue triangle marked with number 126. From there, go up and follow the animal tracks to the 650m contour. It's steep in some places but not dangerous. From the 650m contour, try to find your way into the canyon.

## Water

Low flow, good after rain

## Map

CB09

## Catchment

0.6 km<sup>2</sup>

## Anchors

Mostly single bolts - Tebylon exp3 and Tebylon ring 10mm 316L

## Gear

Minimum of 2x60 meter rope

## Route description

Beautiful approach, 6 easy abseils in low flow, good canyon for beginners. Sharpe edge on abseil 4.

## Time

Car park to canyon: 1h (4.8km)

Canyon to start point 45min

Time in the canyon: 1h 45min

Bridge to car park: 1h

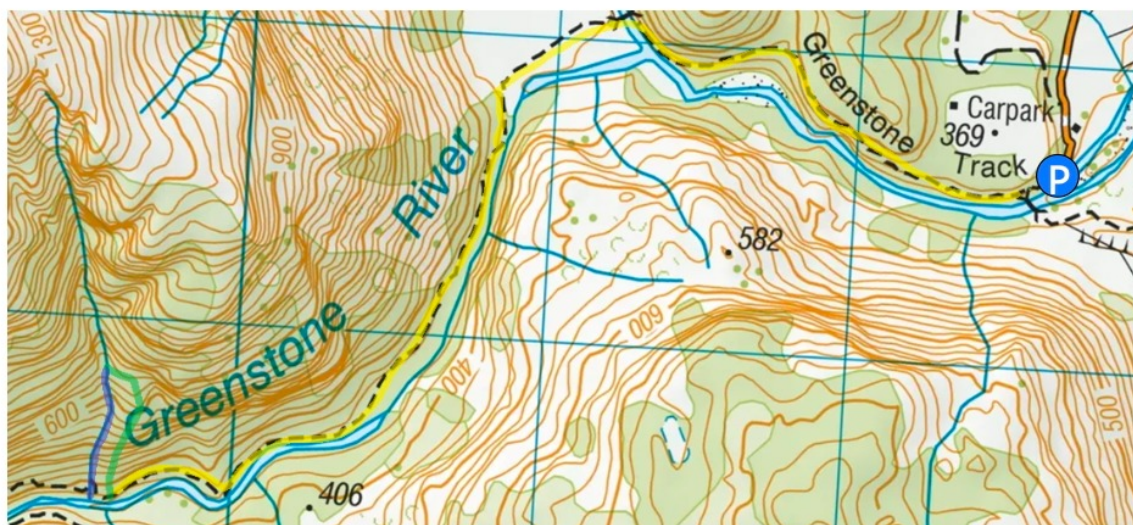
Total time: 4h 30min

## Notes

First descent 18/01/2026

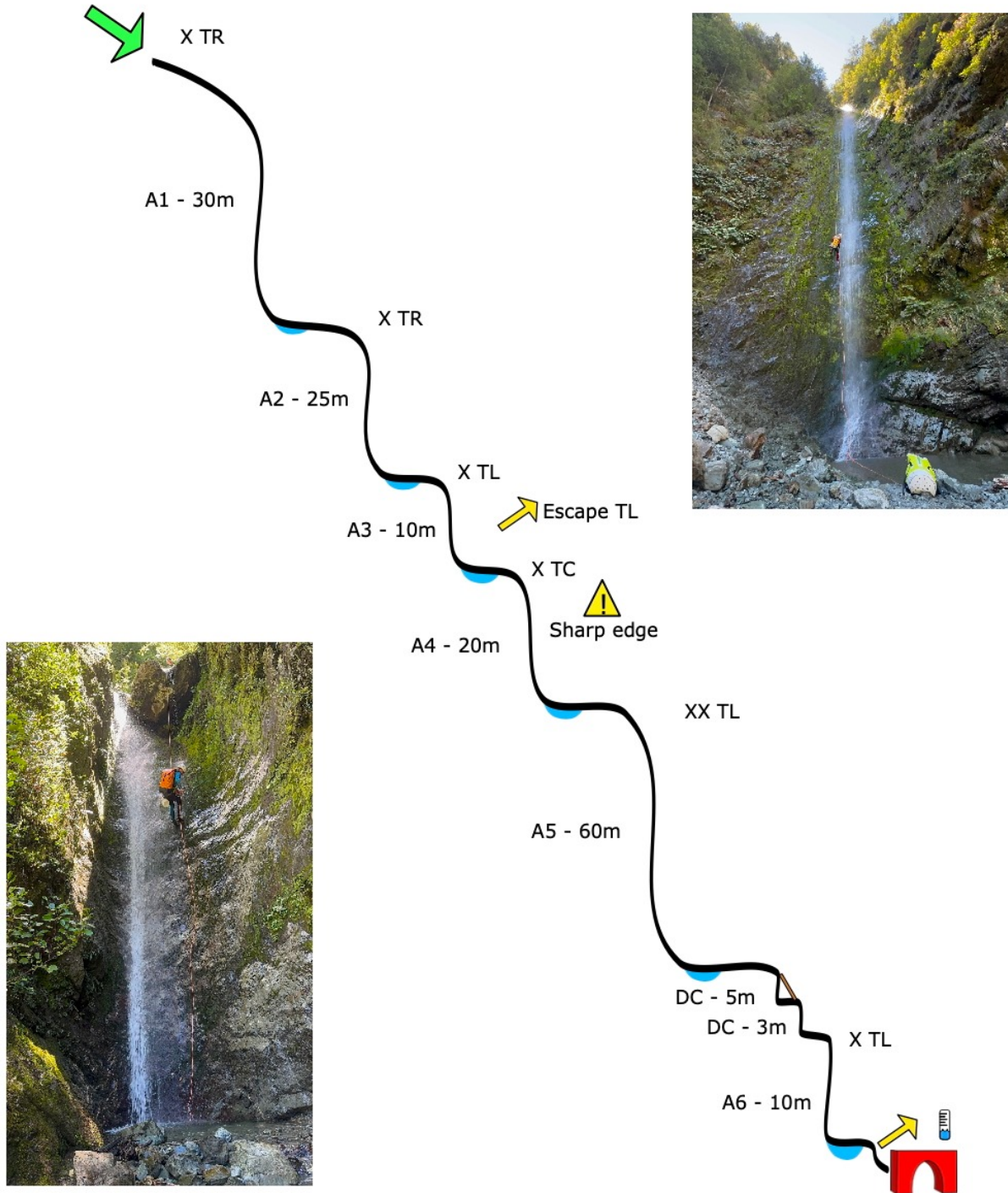
by Pepijn Hoeksema, Jaap Sikkema, Britt Joosten and Anouk Verstraaten.

The canyon is named after Anouk to celebrate her first first descent.

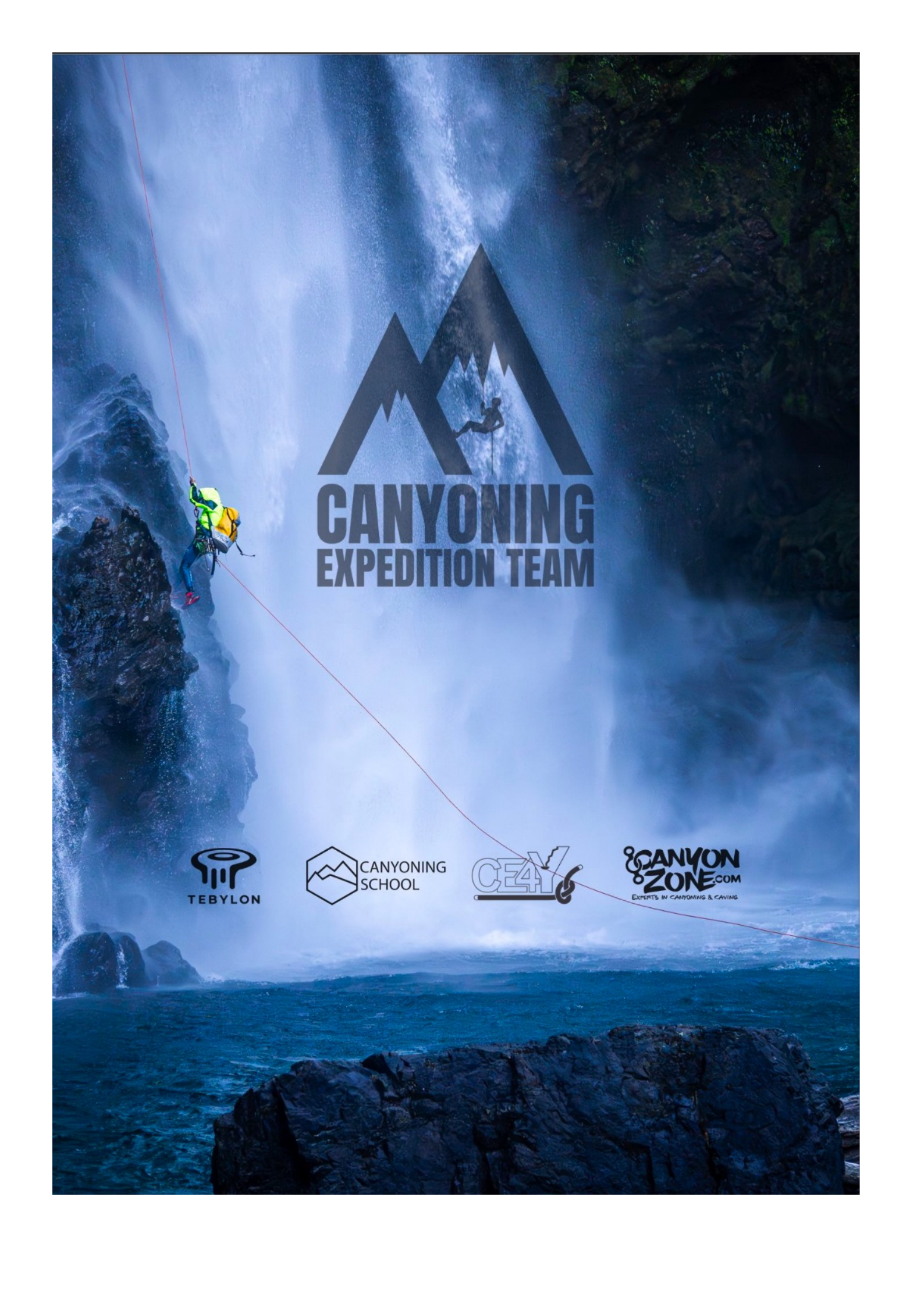




# Noekie creek V3A111



Topo by Pepijn Hoeksema - Vectors from CanyonLog



**CANYONING  
EXPEDITION TEAM**

