

Triazza

Info : La qualité de cette description n'a pas encore été vérifiée ou a été jugée mauvaise.

Si vous connaissez ce canyon, merci de vérifier cette description et de déposer un rapport avec une note pour cette description en utilisant Rapports +*Nouveau rapport*. Si vous constatez une erreur, merci de nous en faire part ou de rejoindre la communauté afin de corriger vous-même cette description.

Créer: 2025-06-30 15:18:54

Mettre à jour: 2025-11-11 22:29:49

Imprimer: 2026-06-22 06:06:26

Pays: Schweiz / Switzerland **Région:** Kanton Graubünden **Sous-région:** Region Engiadina Bassa/Val Müstair

Ville: Scuol

Difficulté: un peu difficile

Niveau: v4 a3 III

Temps total: 5h

Temps approche: 30min

Temps tour: 4h

Temps de retour: 30min

Altitude d'entrée: 1395m

Altitude de sortie: 1240m

Altitude du delta: 155m

Longueur du canyon: 400m

Rapelle le plus haut: 40m

Nombre de rapelles: 7

Transport: à pied

Type de roche: dolomite

Zone de prise d'eau: 4.60km²

Saison: juin - septembre

Orientation: Nord

Meilleur moment:

Évaluation: ★ 0 ()

Info: ★ 0 ()

Belay: ★ 0 ()

Spécialités:

Matériel:

Cordes: 2x 40m

Résumé: (traduction alternative)

Canyon in a unique scenic setting in the Lower Engadine Dolomites. The only known equipped canyon in the Engadin (as of June, 2025). Some abseiling points partly in the water jet (partly obligatory, partly optional). Only smaller / non-swimmable water basins. More of a challenge in the alpine-technical area with some exposed abseiling points and traverses, which require protection both at the access point and at the abseil station as well as prevention of falling rocks. Only recommended when the water level is at depth.

The Triazza Canyon has a challenging hydrology. Despite the manageable area of the aquatic catchment area (4.6 km²), it has a considerable altitude extension of over 1800 m up to an altitude of 3105 m above sea level (Piz Lischana), with great steepness and very little hydrological retention potential. In addition, the Aua Triazza is fed by a glacier (Triazza glacier). The Val Triazza is also known for floods and debris flows.

Hydrologie: (traduction alternative)

The Triazza Canyon has a challenging hydrology. Despite the manageable area of the aquatic catchment area (4.6 km²), it has a considerable altitude extension of over 1800 m up to an altitude of 3105 m above sea level (Piz Lischana), with great steepness and very low hydrological retention potential. In addition, the Aua Triazza is fed by a glacier (Triazza glacier). The Val Triazza is also known for floods and debris flows.

Accès: (traduction alternative)

From Scuol San Jon via Waldstrasse, approx. 30 min on foot (see overview map)

Approche: (traduction alternative)

See overview map.

Access from Waldstrasse (N46.79597, E10.32594) to Rap 1 (N46.79582, E10.32759)

Tour: (traduction alternative)

First ascent: Patrick Y. Müller, Jachen-Andri Gisep (June 8, 2025)

Protection: Stainless steel bolt anchor (10 x 86 mm, AISI 316L stainless steel). Abseil stands consistently drilled redundantly and connected with chain (if significantly above normal waterline) or sling (if deeper).

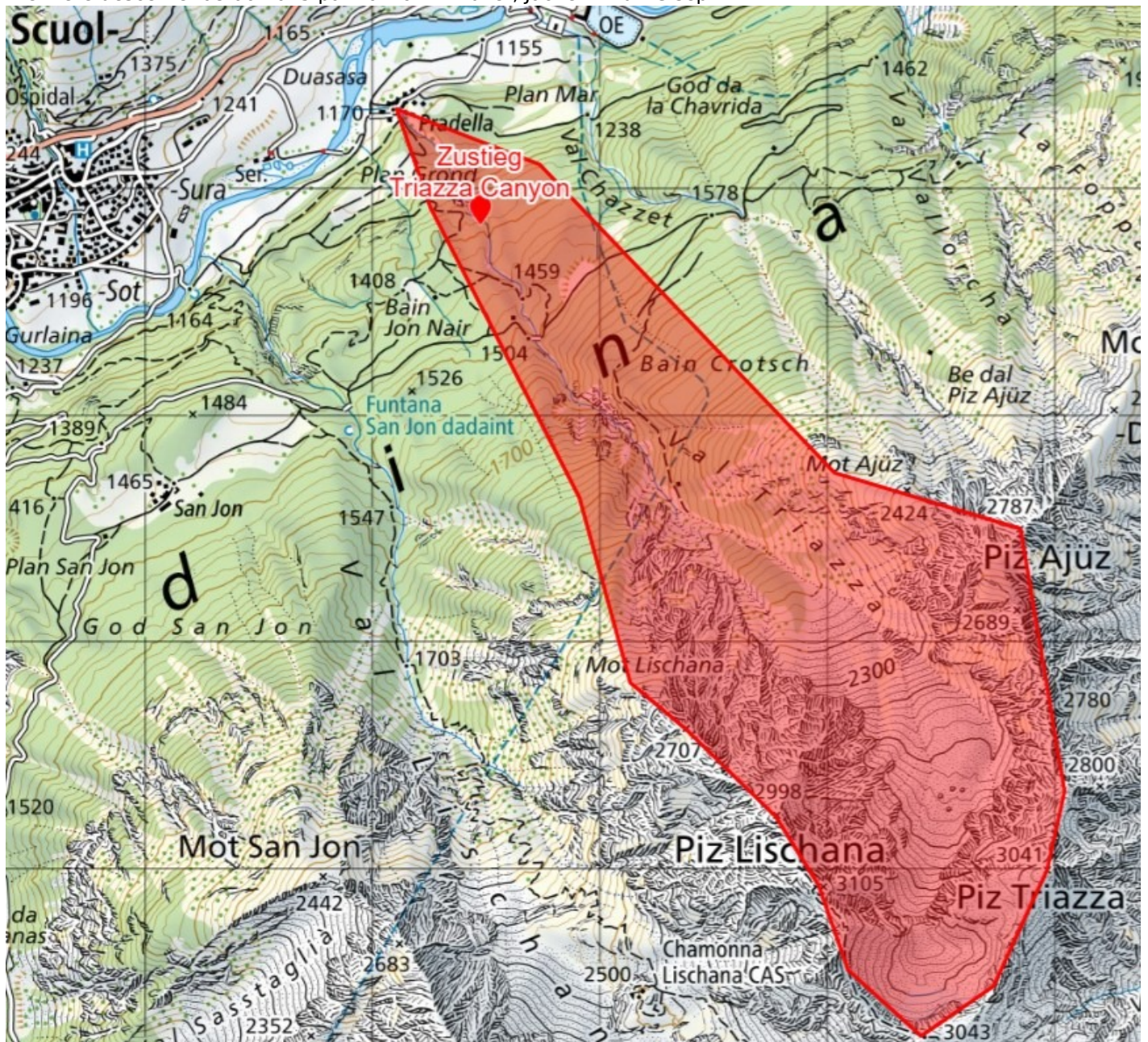
Canyon still needs to be cleared out a little (as of June, 2025)

Retour: (traduction alternative)

Via Pradella to Scuol, approx. 30 min on foot (see overview map)

Coordonnées:Départ du Canyon [46.7958 10.3276](#)Départ alternatif du Canyon [46.7969 10.3265](#)Point de repère [46.7960 10.3259](#)**Rapports:**

Première descente: 08.06.2025 par Patrick Y. Müller, Jachen-Andri Gisep



Übersichtskarte und aquatischen Einzugsgebiet



Satelliten Topo