

Noekie Creek

Crear: 2026-01-19 10:28:17	Actualizar: 2026-01-19 11:14:42	Imprimir: 2026-04-04 03:04:54
País: New Zealand Región: Otago Subregión: Queenstown-Lakes District Ciudad: Greenstone valley		
Dificultad: no tan difícil	Grado: v3 a1 II	Tiempo total: 4h30
Tiempo acceso: 1h45	Tiempo tour: 1h45	Tiempo regreso: 1h
Altitud de entrada: 650m	Altitud de salida: 410m	Altitude delta: 240m
Longitud del cañón: m	Rapel más alto: 60m	Cantidad rapells: 6
Transporte: Coche obligatorio	Tipo de roca:	Zona de entrada: 0.60km ²
Temporada: octubre - marzo	Orientación:	Mejor época:
Clasificación: ★ 1.5 (1)	Información: ★ 3 (1)	Belay: ★ 1 (1)
Especialidades:		
Equipo: Cuerdas: 2x60		
Resumen: Sunny canyon with 6 easy abseils up to 60m.		
Hidrología: Canyon with a small catchment area. Low flow, good after rain and in the start of the season.		
Acceso: Drive from Queenstown to Glenorchy, go to Kinloch and follow the dirt road to the Greenstone carpark. You will have to pass some fords.		
Acceso: Follow the Greenstone Track to the creek and look for the blue triangle marked with number 126. From there, go up and follow the animal tracks to the 650m contour. It's steep in some places but not dangerous. From the 650m contour, try to find your way into the canyon.		
Recorrido: Beautiful approach, 6 easy abseils in low flow, good canyon for beginners. Sharpe edge on abseil 4.		
Regreso: From the bridge, walk back to the carpark using the same trail you came from (Greenstone Trail).		
Coordenadas: Aparcamiento Entrada y Salida -44.9341 168.3450 Inicio del Cañón -44.9413 168.3048 Final del Cañón -44.9447 168.3041		
Informes:		
2026-01-18 Pepijn Hoeksema ★ 🏠 ★★★ ⚓ ★ 🌊 Normal 👍 Completado 18/01/2026 we opened Noekie Creek with Jaap, Pepijn, Anouk and Britt. Low flow canyon with 6 abseils.		

Primer descenso: 18.01.2026 en Pepijn Hoeksema, Jaap Sikkema, Britt Joosten, Anouk Verstraaten



Noekie creek V3A1II



Location

Greenstone valley, Glenorchy, Otago, New Zealand.

Character

Sunny canyon with 6 easy abseils up to 60m.

Approach by car

Drive from Queenstown to Glenorchy, go to Kinloch and follow the dirt road to the Greenstone carpark. You will have to pass some fords.

Approach on foot

Follow the Greenstone Track to the creek and look for the blue triangle marked with number 126. From there, go up and follow the animal tracks to the 650m contour. It's steep in some places but not dangerous. From the 650m contour, try to find your way into the canyon.

Water

Low flow, good after rain

Map

CB09

Catchment

0.6 km²

Anchors

Mostly single bolts - Tebylon exp3 and Tebylon ring 10mm 316L

Gear

Minimum of 2x60 meter rope

Route description

Beautiful approach, 6 easy abseils in low flow, good canyon for beginners. Sharpe edge on abseil 4.

Time

Car park to canyon: 1h (4.8km)

Canyon to start point 45min

Time in the canyon: 1h 45min

Bridge to car park: 1h

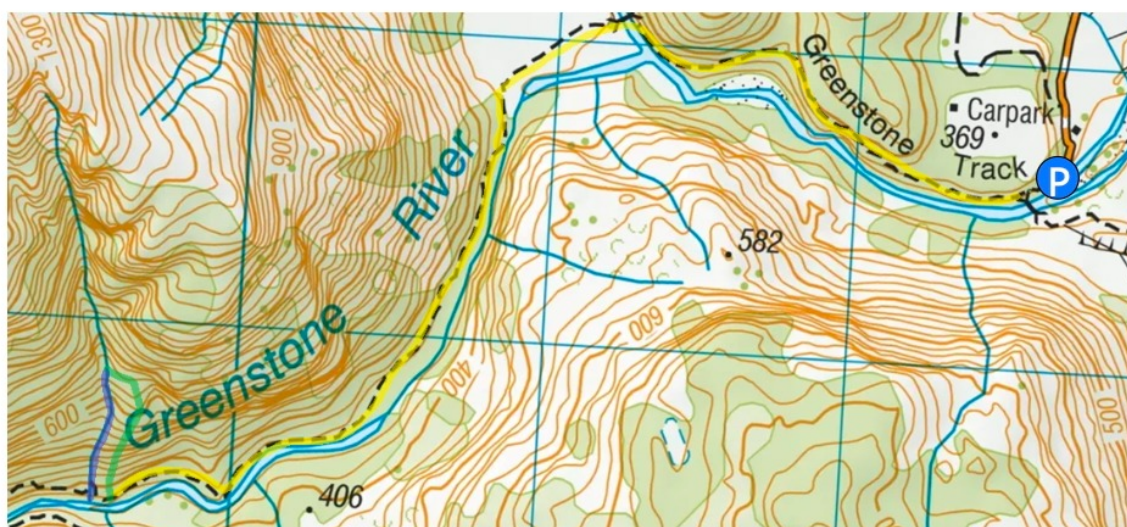
Total time: 4h 30min

Notes

First descent 18/01/2026

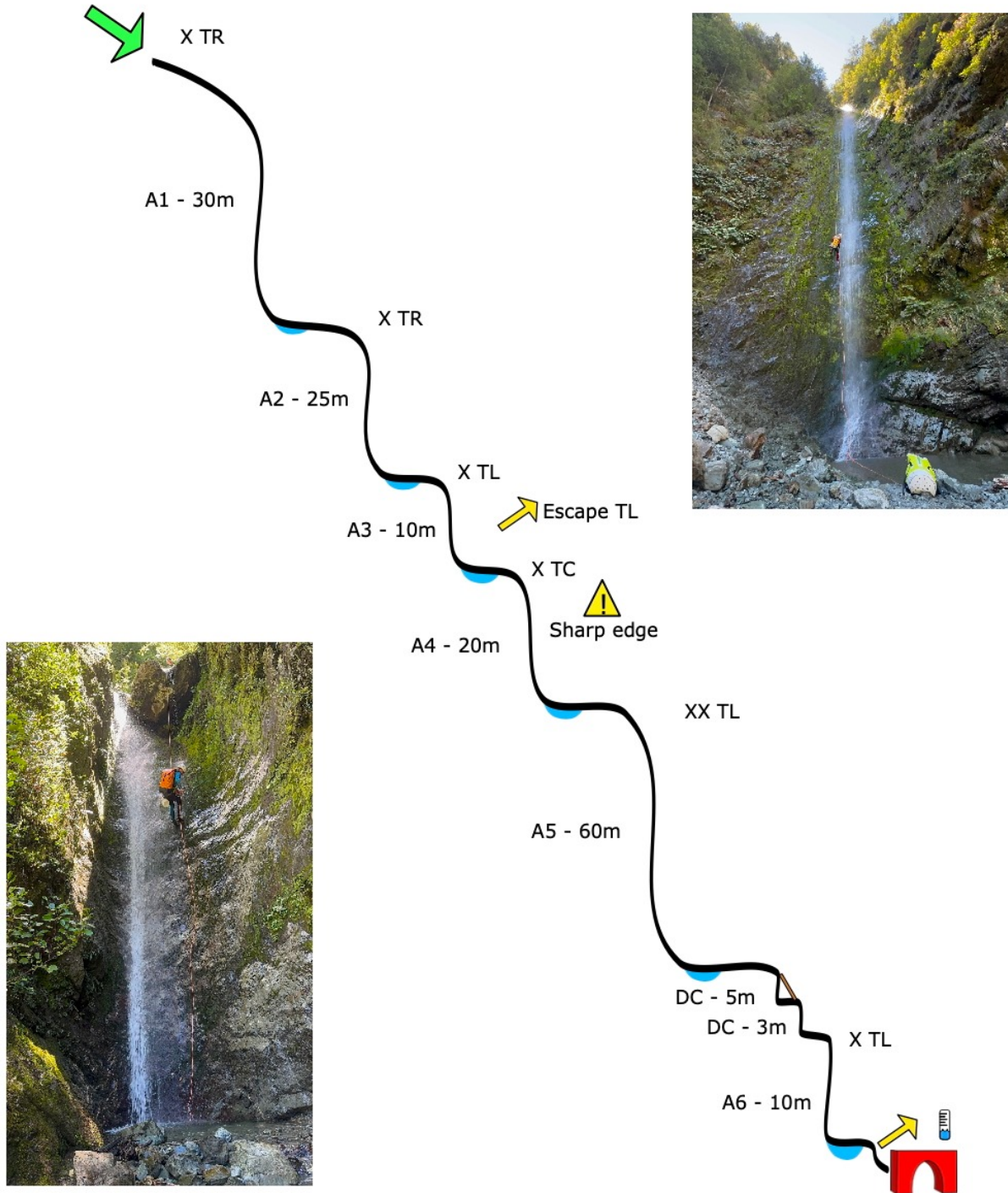
by Pepijn Hoeksema, Jaap Sikkema, Britt Joosten and Anouk Verstraaten.

The canyon is named after Anouk to celebrate her first first descent.

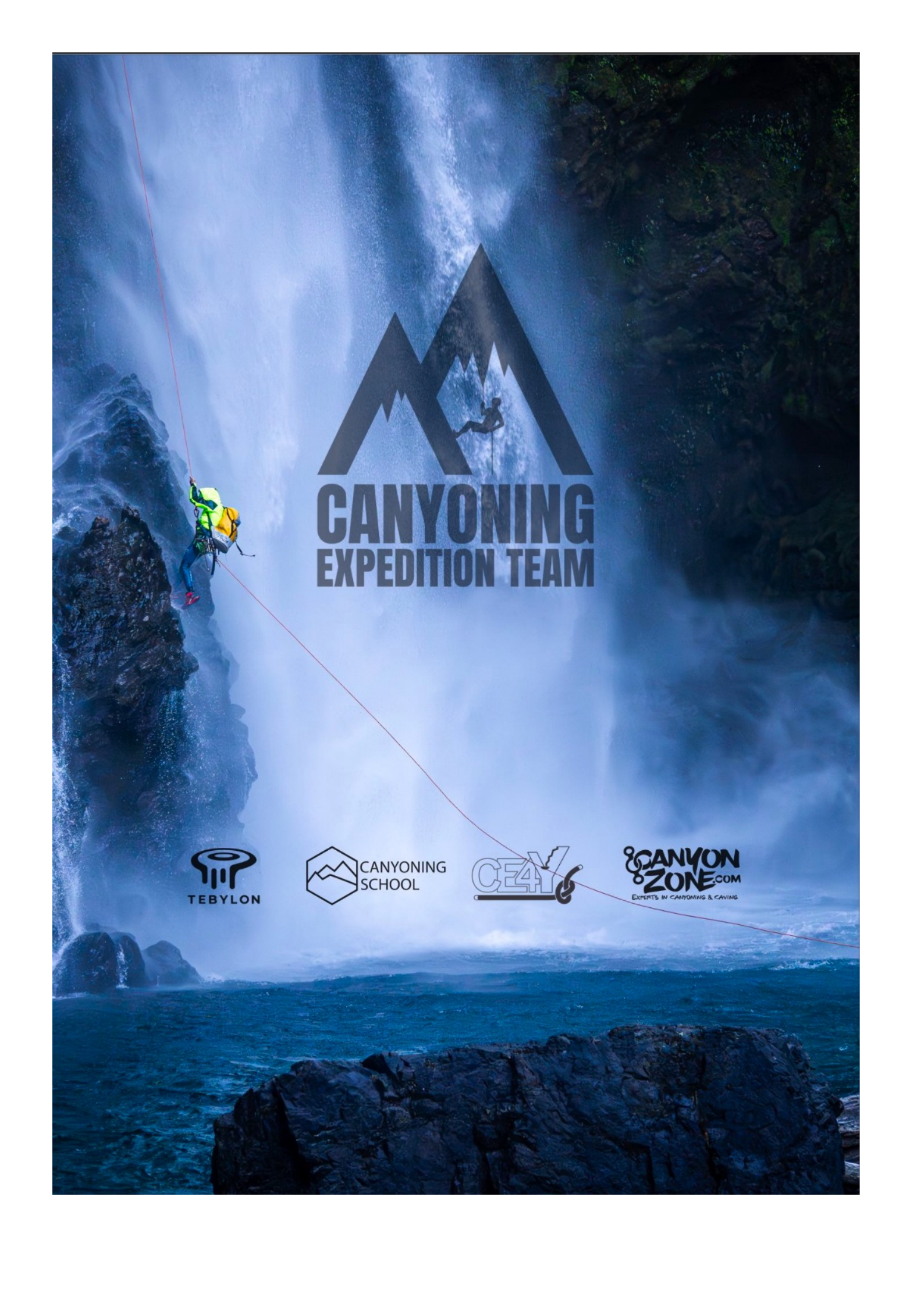




Noekie creek V3A111



Topo by Pepijn Hoeksema - Vectors from CanyonLog



**CANYONING
EXPEDITION TEAM**

